

Data code:

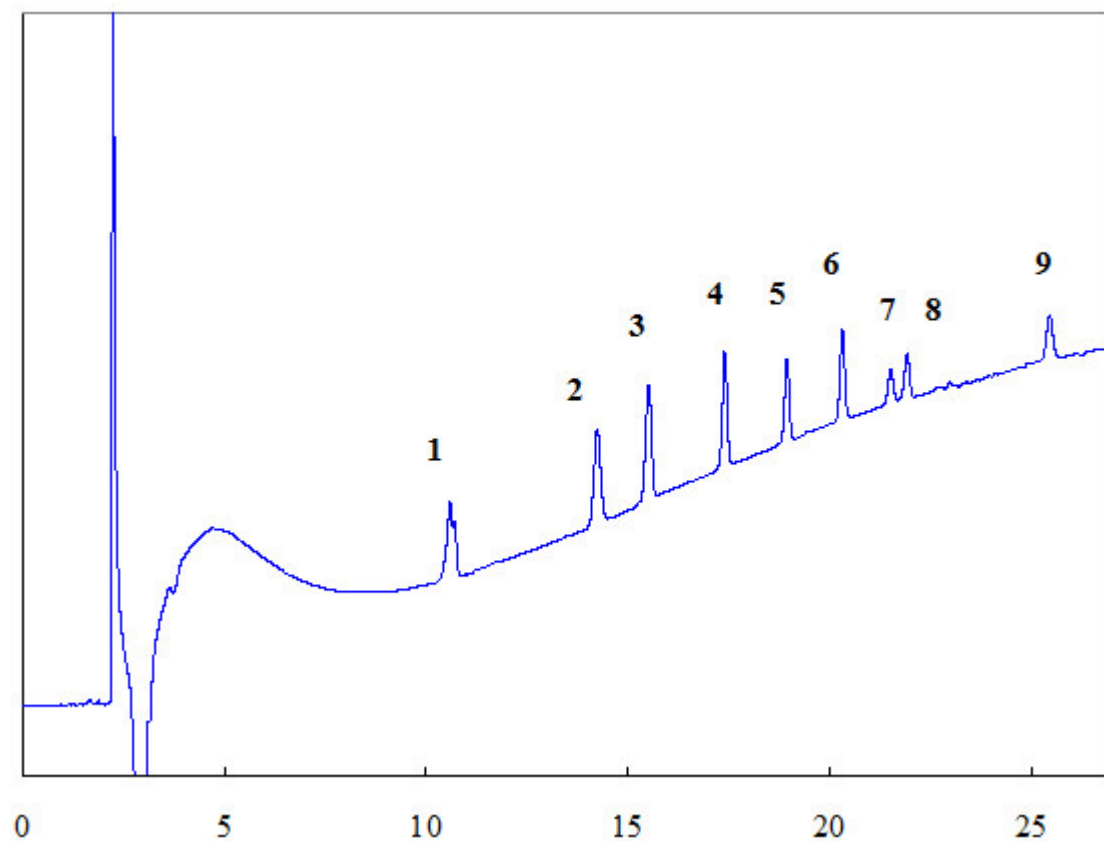
T01137

**Application Title:**

Separation of Peptides by HILIC

**Compound:**

Methionine-Enkephalin; TRH; Angiotensin III; Angiotensin II; Angiotensin I; NeurokininA; Tuftsin;  $\alpha$ -endorphin; Insulin



**Chromatographic conditions**

**Column:** TSKgelAmide-80 3 $\mu$ m 4.6mm $\times$ 15cm, P/N 21867, 4.6mm  $\times$ 15cm

**Mobile Phase:** A:0.1%TFA in H<sub>2</sub>O; B:0.1%TFA in CH<sub>3</sub>CN;  
gradient;0min (B95%) $\rightarrow$ 30min (B65%)

**Flow Rate:** 1.0mL/min

**Detection:** UV/VIS 215nm

**Temperature:** 40 $^{\circ}$ C

**Injection Volume:** 5 $\mu$ L

**Title:** Separation of Peptides by HILIC