

Rituximab Analysis

Zenix-C Light Scattering SEC -MALS 300

Columns used: Zenix-C SEC-300, 3 um, 7.8x300mm, Light Scattering SEC
P/N: 233300LS-7830



Rituximab Separation – Triple Detectors (UV vs MALS vs RI) by Zenix-C SEC-MALS column

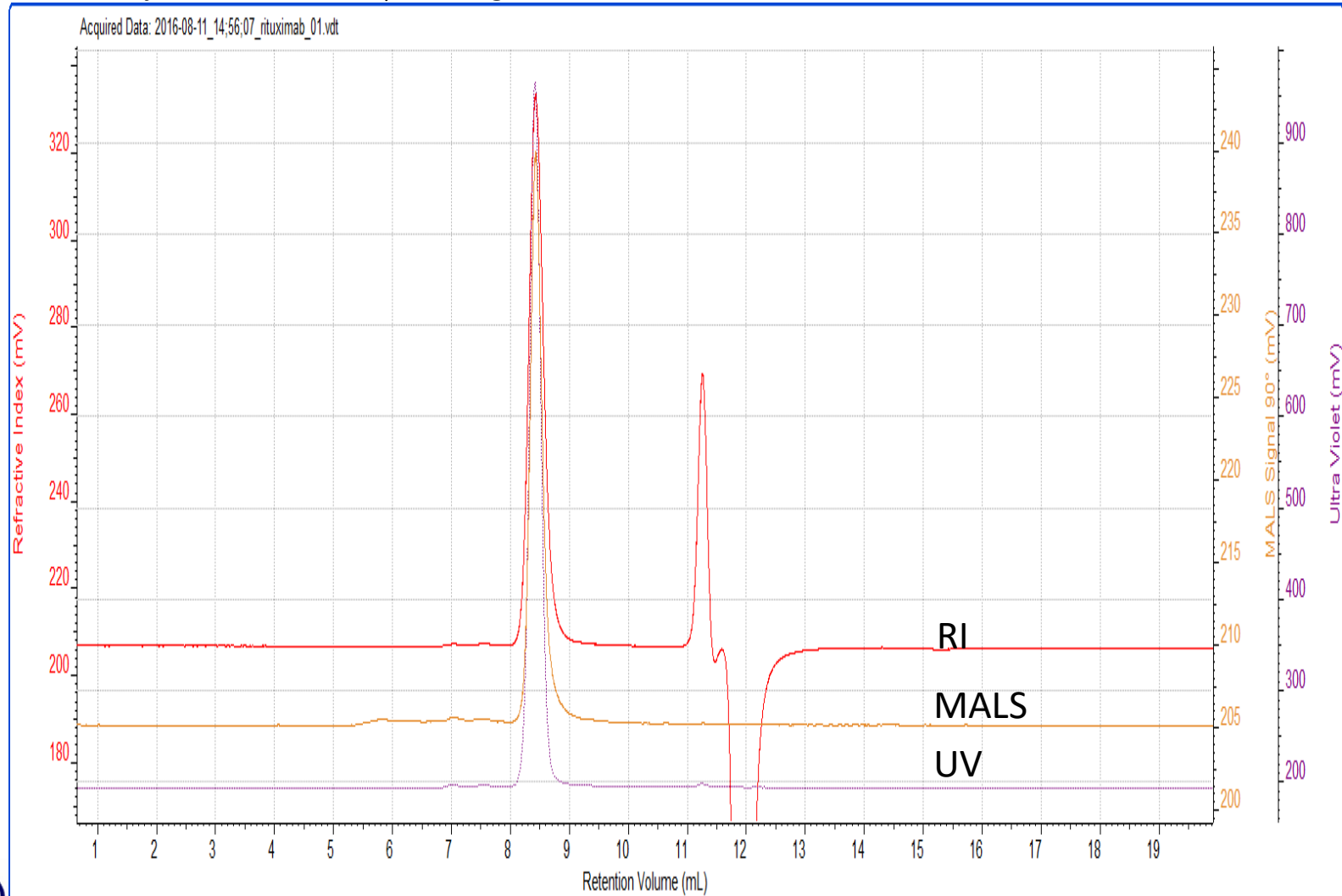
EM1005

Column: Zenix-C SEC-300 (3 μm , 300 \AA), 7.8x 300 mm, Light Scattering SEC

Mobile phase: 20 mM sodium phosphate buffer + 700 mM NaCl, pH 7.0

Flow rate: 1 mL/min; Detector: UV 280 nm, RI, MALS; Column temperature: 25 $^{\circ}\text{C}$,

Injection volume: 10 μL , 10 mg/mL rituximab



Zoom-in view of Rituximab Separation by Zenix-C SEC-MALS column

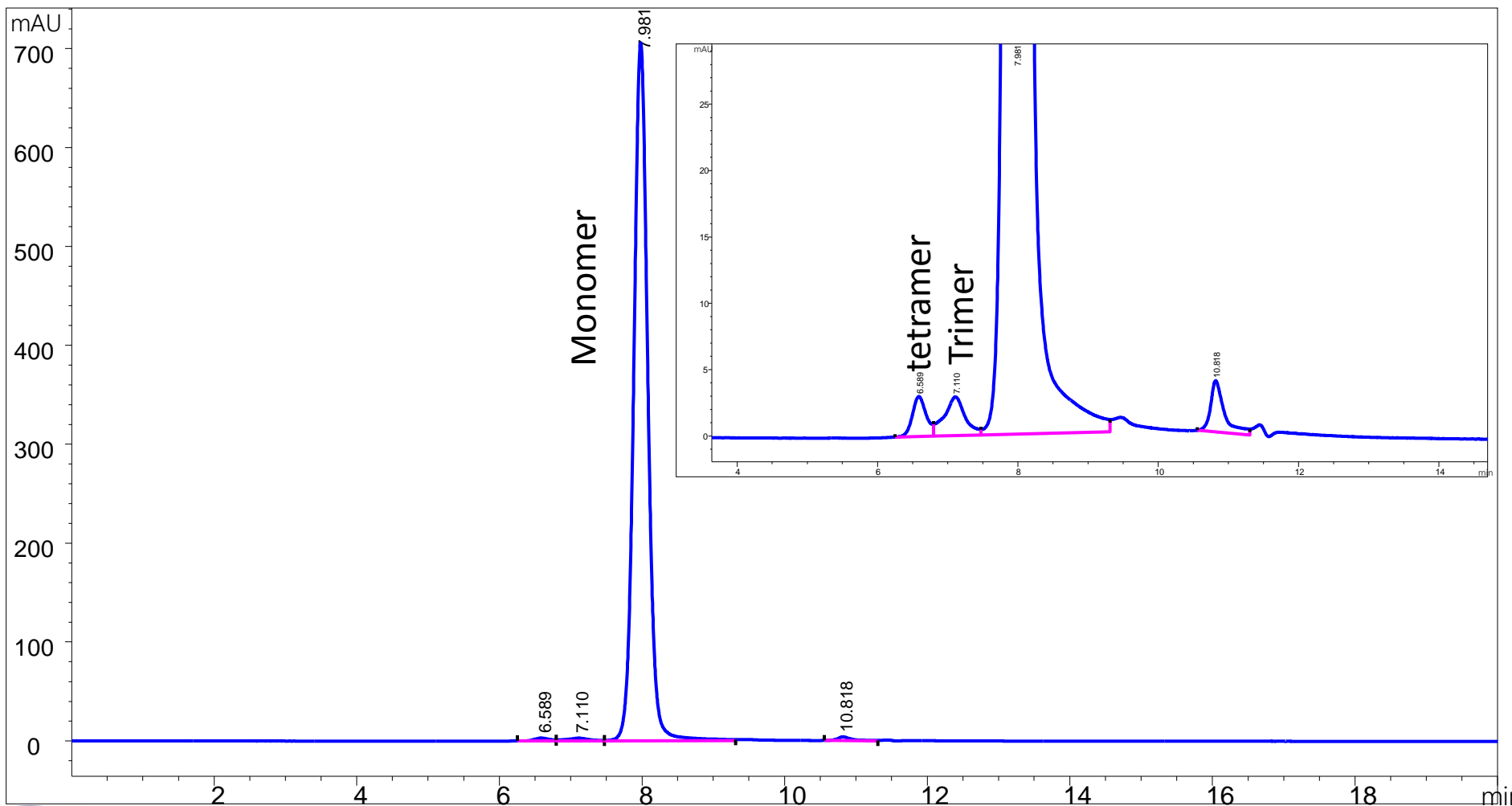
Column: Zenix-C SEC-300 (3 μm , 300 \AA), 7.8x 300 mm, Light Scattering SEC

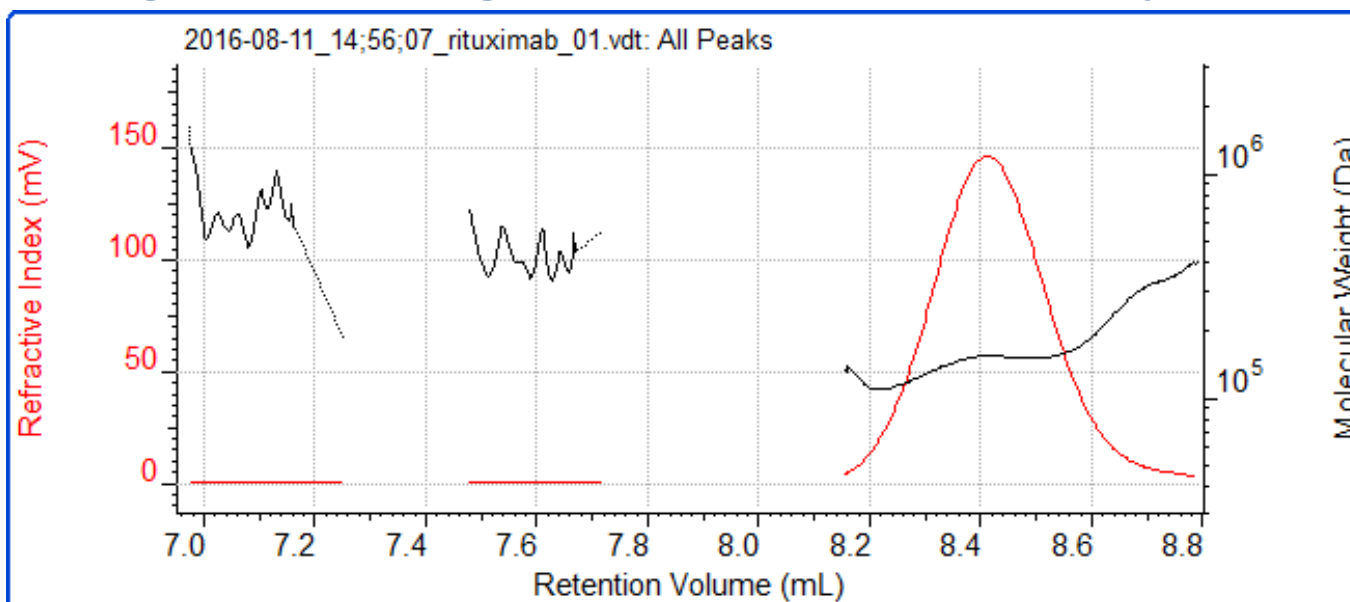
EM1005

Mobile phase: 20 mM sodium phosphate buffer + 700 mM NaCl, pH 7.0

Flow rate: 1 mL/min; Detector: UV 280 nm; Column temperature: 25 $^{\circ}\text{C}$,

Injection volume: 10 μL , 10 mg/mL rituximab





Light Scattering results

Peak	1	2	3
Ret Vol (mL)	7.030	7.534	8.410
Mw (Da)	591,733	429,578	150,414
Mw/Mn	1.134	1.030	1.027
Rg(w) (nm)	24.74	19.08	10.22
Wt Fr (Peak)	0.0028	0.0031	0.9942
MAL S Area (90°)	0.11	0.08	8.46