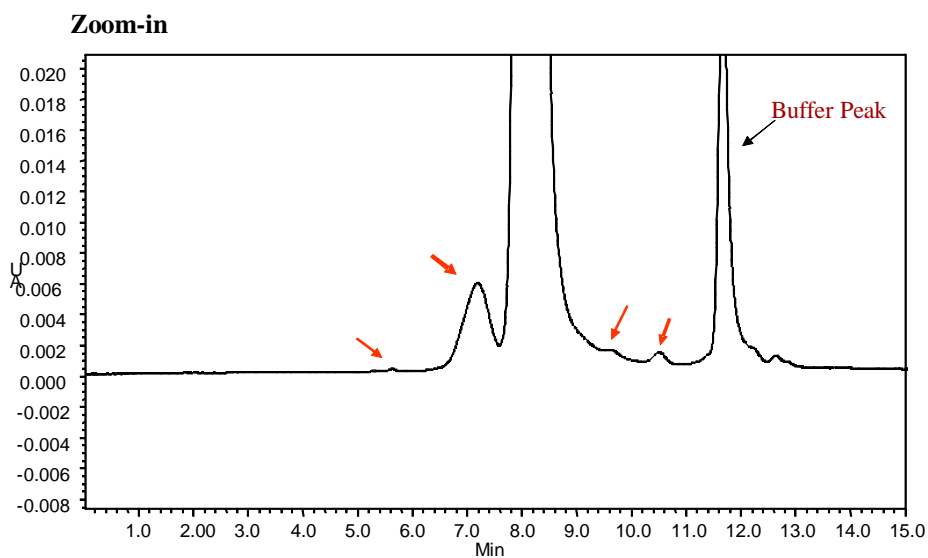
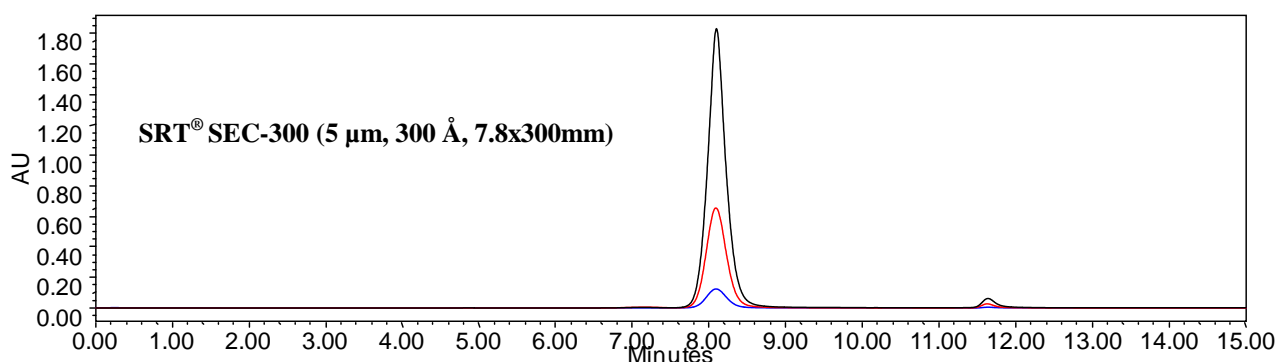




## Separation of Monoclonal Antibody on SRT<sup>®</sup>-300



Mobile Phase: 150 mM phosphate buffer, pH 7  
Flow Rate: 1.0 mL/min  
Temperature: Ambient  
Sample: MAb  
Concentrations: 10, 2.5, 0.5 mg/mL  
Injection Volume: 10  $\mu\text{L}$

Keywords: size exclusion, SRT, monoclonal antibody, loading capacity, zoom-in