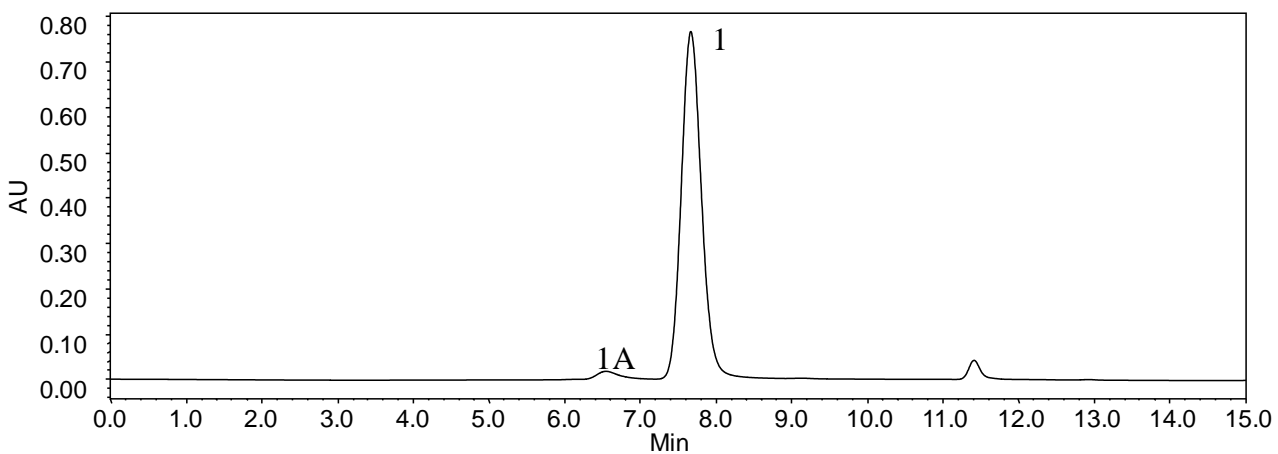




Analysis of MAb on SRT[®]-C 300



Column:	SRT [®] -C 300 (5 μ m, 300 \AA , 7.8x300 mm)
Mobile Phase:	150 mM sodium phosphate buffer, pH 7
Temperature:	Ambient (~23 $^{\circ}$ C)
Flow Rate:	1.0 mL/min
Detection:	UV 214 nm
Sample Concentration:	5 mg/mL
Injection Volume:	2.5 μ L
Sample:	MAb

Keywords: Size exclusion, SRT-C, monoclonal antibody