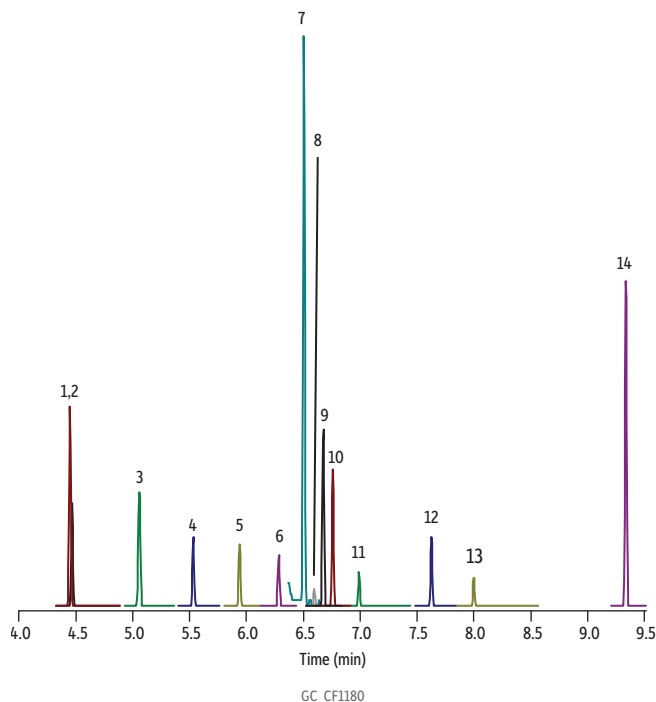


Nitrosamines on Rxi-624Sil MS

AUTHORIZED DISTRIBUTOR
 MZ-Analysentechnik GmbH, Barcelona-Allee 17 • D-55129 Mainz
 Tel. +49 6131 880 96-0, Fax. +49 6131 880 96-20
 e-mail: info@mz-at.de, www.mz-at.de



Peaks	tr (min)	Conc. (ng/mL)	Precursor Ion	Product Ion	Collision Energy	Confirmation Precursor Ion	Confirmation Product Ion	Collision Energy
1. N-Nitrosodimethylamine (NDMA)	4.48	120	74	42	18	74	43	12
2. N-Nitrosodimethylamine-d6 (NDMA-d6)	4.48	150	80	46	15	80	48	10
3. N-Nitrosomethylethylamine (NMEA)	5.08	120	88	42	16	88	43	8
4. N-Nitrosodiethylamine (NDEA)	5.56	120	102	44	12	102	56	14
5. N-Nitrosoethylisopropylamine (NEIPA)	5.96	120	116	44	12	116	99	6
6. N-Nitroso-diisopropylamine (NDIPA)	6.31	128	130	71	12	130	88	6
7. Methylaniline (NMPA)	6.53	131	107	77	26	106	77	14
8. N-Nitroso-di-n-propylamine (NDPA)	6.62	120	130	85	8	130	113	6
9. N-Nitrosomorpholine (NMOR)	6.71	120	116	56	10	116	86	6
10. N-Nitrosopyrrolidine (NPYR)	6.79	120	100	55	6	100	68	8
11. N-Nitrosopiperidine (NPIP)	7.02	120	114	69	6	114	84	8
12. N-Nitrosodi-n-butylamine (NDBA)	7.65	120	158	99	8	116	99	6
13. N-Nitroso-N-methyl-4-aminobutyric acid (NMBA)	8.02	365	130	70	10	130	98	5
14. Phenylbenzeneamine (NDPHA)	9.36	120	169	66	22	168	139	36

Column Rxi-624SilMS, 30 m, 0.25 mm ID, 1.4 µm (cat.# 13868)
Sample Nitrosamine calibration mix, Method 521 (cat.# 31898)
 N-Nitrosodimethylamine-d6 (cat.# 33910)
 N-Nitrosodiphenylamine (cat.# 31429)
 N-Nitroso-methylphenylamine
 N-Nitroso-diisopropylamine
 N-Nitrosoethylisopropylamine
 N-Nitrosomorpholine
 Methanol

Diluent:
Injection
 Inj. Vol.: 1 µL split (split ratio 10:1)
 Liner: Topaz 4.0 mm ID straight inlet liner w/ wool (cat.# 23444)
 Inj. Temp.: 280 °C

Oven
 Oven Temp.: 40 °C (hold 0.5 min) to 320 °C at 30 °C/min (hold 7 min)
Carrier Gas
 He, constant flow
Flow Rate: 1.2 mL/min
Detector
 MS
 Mode: SIM
 Transfer Line Temp.: 280 °C
 Analyzer Type: Quadrupole
 Source Temp.: 325 °C

Instrument Notes
 Thermo Scientific TSQ 8000 Triple Quadrupole GC-MS
 For N-nitroso-methylphenylamine (NMPA) and N-nitrosodiphenylamine (NDPHA), the nitroso groups are cleaved in the inlet to form methylaniline and phenylbenzeneamine, respectively.