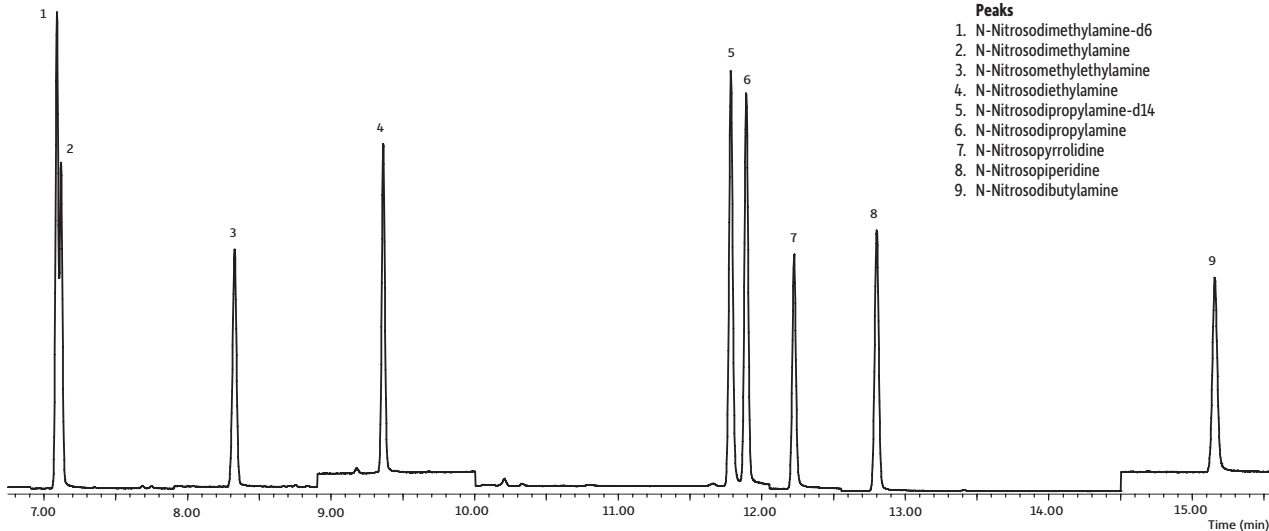


# Nitrosamines in Drinking Water on Rxi®-624Sil MS by Modified EPA Method 521 Utilizing CSR-LVSI



- Peaks**
1. N-Nitrosodimethylamine-d6
  2. N-Nitrosodimethylamine
  3. N-Nitrosomethylethylamine
  4. N-Nitrosodiethylamine
  5. N-Nitrosodipropylamine-d14
  6. N-Nitrosodipropylamine
  7. N-Nitrosopyrrolidine
  8. N-Nitrosopiperidine
  9. N-Nitrosodibutylamine

**Column** Rxi®-624Sil MS, 30 m, 0.25 mm ID, 1.40 µm (cat.# 13868)  
 using Rxi® guard column 5 m, 0.25 mm ID (cat.# 10029)  
 with universal Press-Tight® connectors (cat.# 20429)

**Sample** N-Nitrosodimethylamine-d6 (cat.# 33910)  
 N-Nitrosodi-n-propylamine-d14 (cat.# 33911)  
 Nitrosamine calibration mix, method 521 (cat.# 31898)

**Diluent:** Dichloromethane  
**Conc.:** 10 ng/mL

**Injection**  
**Inj. Vol.:** 10 µL splitless (hold 1 min)  
**Liner:** Premium 4 mm single taper w/wool (cat.# 23303.5)  
**Inj. Temp.:** 250 °C  
**Purge Flow:** 80 mL/min

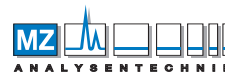
**Oven**  
**Oven Temp:** 38 °C (hold 1 min) to 160 °C at 12 °C/min to 200 °C at 5 °C/min (hold 1 min)  
**Carrier Gas** He, constant flow  
**Flow Rate:** 1.4 mL/min

**Detector** Agilent 5975C

SIM Program:

Group	Start Time (min)	Ion(s)	Dwell (ms)
1	6.9	80, 74, 46, 43, 42 m/z	23
2	7.9	88, 56, 43, 42 m/z	30
3	8.9	102, 56, 44, 42 m/z	30
4	10	130, 78, 70, 58, 46, 43, 42 m/z	15
5	12.05	100, 68, 42, 41 m/z	30
6	14.5	158, 116, 84, 57, 41 m/z	23

**Transfer Line**  
**Temp.:** 280 °C  
**Analyzer Type:** Quadrupole  
**Source Temp.:** 230 °C  
**Quad Temp.:** 150 °C  
**Solvent Delay**  
**Time:** 6.9 min  
**Tune Type:** BFB  
**Ionization Mode:** EI  
**Instrument** Agilent 7890A GC & 5975C MSD



AUTHORIZED DISTRIBUTOR

MZ-Analystechnik GmbH  
 Barockstrae-Allee 17 • D-55129 Mainz  
 Tel +49 6131 880 96-0  
 Fax +49 6131 880 96-20  
 e-mail: info@mz-at.de  
 www.mz-at.de