

## Acrylamide Reference Standard (200 ppb) and IS on Allure Acrylamide Column

Peaks	tr (min)	Conc. (ng/mL)	Precursor	Product
1. Acrylamide-2,3,3-d3	1.739	200	75.1	58.1
2. Acrylamide	1.777	200	72.1	55.1

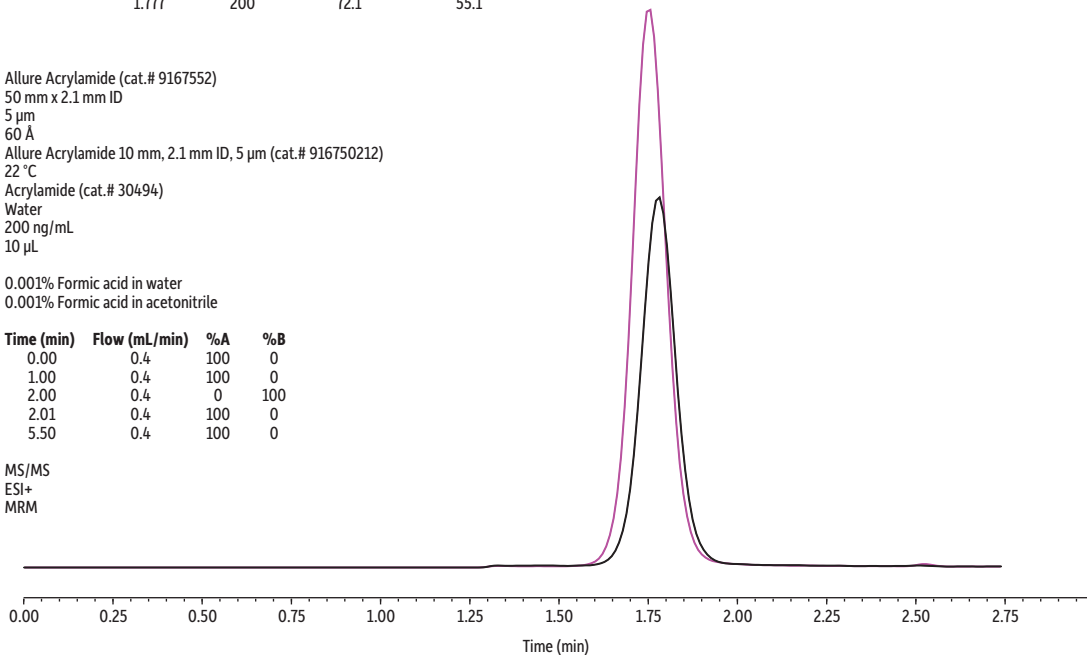
**Column** Allure Acrylamide (cat.# 9167552)  
**Dimensions:** 50 mm x 2.1 mm ID  
**Particle Size:** 5 µm  
**Pore Size:** 60 Å  
**Guard Column:** Allure Acrylamide 10 mm, 2.1 mm ID, 5 µm (cat.# 916750212)  
**Temp.:** 22 °C  
**Sample** Acrylamide (cat.# 30494)  
**Diluent:** Water  
**Conc.:** 200 ng/mL  
**Inj. Vol.:** 10 µL

### Mobile Phase

A: 0.001% Formic acid in water  
B: 0.001% Formic acid in acetonitrile

Time (min)	Flow (mL/min)	%A	%B
0.00	0.4	100	0
1.00	0.4	100	0
2.00	0.4	0	100
2.01	0.4	100	0
5.50	0.4	100	0

**Detector** MS/MS  
**Ion Mode:** ESI+  
**Mode:** MRM



LC\_FS0529

