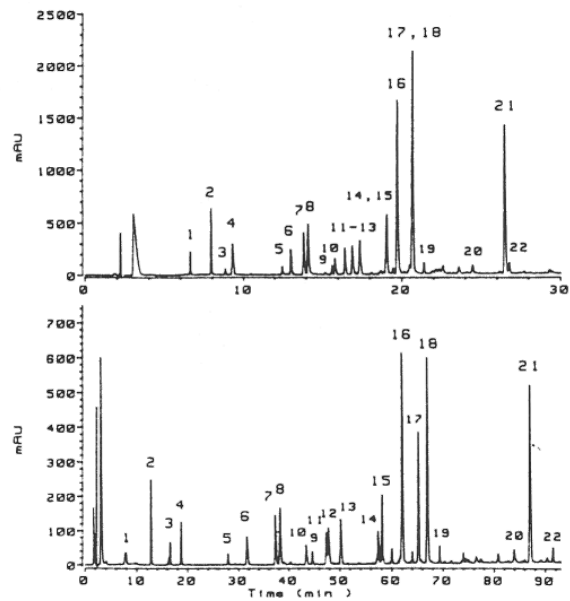


Application Number 108070  
Method HPLC  
Results



Legend:

Experimental separations of the tryptic digest of rhGH used as input for computer simulation, 100 µg samples injected in 100 µL digestion buffer

- 1 - T7
- 2 - T14
- 3 - T14c
- 4 - T12
- 5 - T10a
- 6 - T13
- 7 - T20-21
- 8 - T15
- 9 - T8
- 10 - T17-18-19
- 11 - T2
- 12 - T18-19
- 13 - T1
- 14 - T10b
- 15 - T11
- 16 - T4
- 17 - T10

18 - T6-16  
19 - T6-16c  
20 - unknown  
21 - T9  
22 - unknown

Substances tryptic digest of rhGH (recombinant human growth hormone)

Product(s)	Phase	REF	Webshop
	NUCLEOSIL C18	720120.46	<a href="#">Shop now</a>

Matrix

Sample(s) The protein is cleaved by the proteolytic enzyme trypsin to peptides.

Conditions Eluent A: 0.1 % trifluoroacetic acid (TFA) in water  
Eluent B: 0.08 % TFA in acetonitrile  
Gradient: linear from 0 to 60 % B in 30 min (upper trace)  
Gradient: linear from 0 to 60 % B in 120 min (bottom trace)  
Flow rate: 1 mL/min  
Temperature: 40 °C

Detection UV, 220 nm

Note


Author Chloupek, R.C. et al.

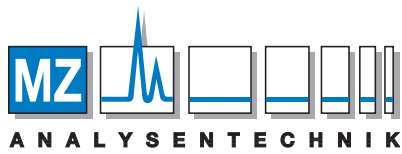
Source J. Chromatogr. 594 (1992) 65 - 73

Disclaimer Concerning questions to literature applications please contact the cited author/s. Chemicals mentioned in applications are not manufactured or sold by MACHEREY-NAGEL. Applications mentioned in MACHEREY-NAGEL literature or databases are provided for informational purposes only. MACHEREY-NAGEL does not warrant that all applications have been tested in MACHEREY-NAGEL laboratories using MACHEREY-NAGEL

products. MACHEREY-NAGEL does not warrant the correctness of the applications.

Share via Mail

 Print View



**AUTHORIZED DISTRIBUTOR**

MZ-Analysentechnik GmbH, Barcelona-Allee 17 • D-55129 Mainz

Tel +49 6131 880 96-0, Fax +49 6131 880 96-20

e-mail: [info@mz-at.de](mailto:info@mz-at.de), [www.mz-at.de](http://www.mz-at.de)