

Soft drink additives

Method:
HPLC

Matrix

Application-No.:
118560

Substances: ascorbic acid; acesulfam k; saccharin; caffeine; aspartame; quinine; vanillin; sorbic acid; benzoic acid

Column: EC 150/4.6 NUCLEODUR® 100-5 C8 ec

Phase: NUCLEODUR® 100-5 C8 ec

REF number: 760702.46

Conditions: Eluent: 20 mM KH₂PO₄, pH 3 / acetonitrile (5:1, v/v)
Flow rate: 1.9 ml/min
Temperature: 25 °C
Injection: 10 µl

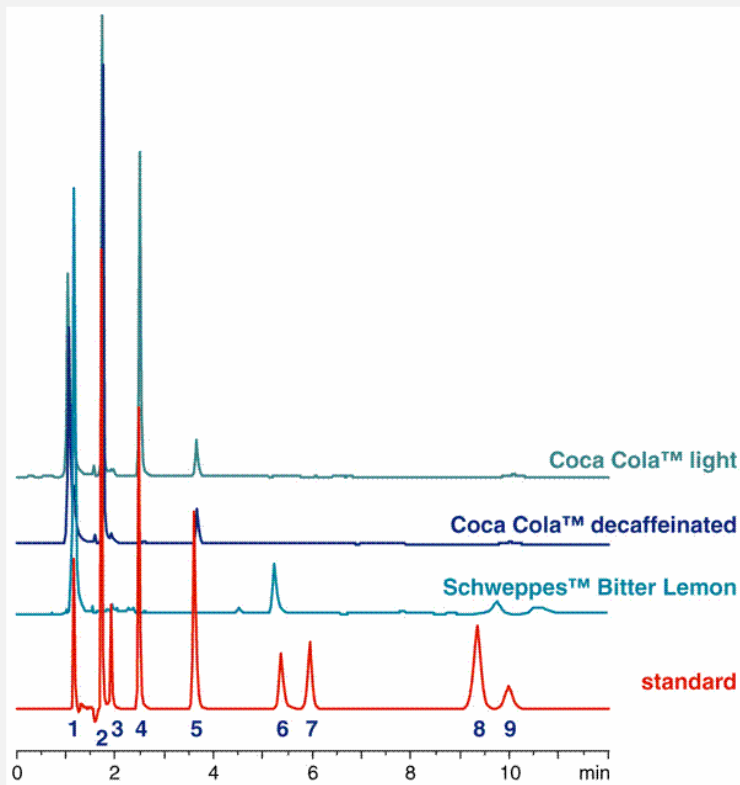
Detection: UV, 220 nm

Author(-s): HPLC Department

Source: MACHEREY-NAGEL

Keywords: soft drinks; sweeteners

Chromatogram:



Legend:

Peaks:

- 1) Ascorbic acid
- 2) Acesulfam K
- 3) Saccharin
- 4) Caffeine
- 5) Aspartame®
- 6) Quinine
- 7) Vanillin
- 8) Sorbic acid
- 9) Benzoic acid

AUTHORIZED DISTRIBUTOR

MZ-Analyse-technik GmbH, Barcelona-Allee 17 • D-55129 Mainz

Tel +49 6131 880 96-0, Fax +49 6131 880 96-20

e-mail: info@mz-at.de, www.mz-at.de

