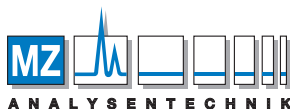


InertSearch™ for LC

Inertsil® Applications

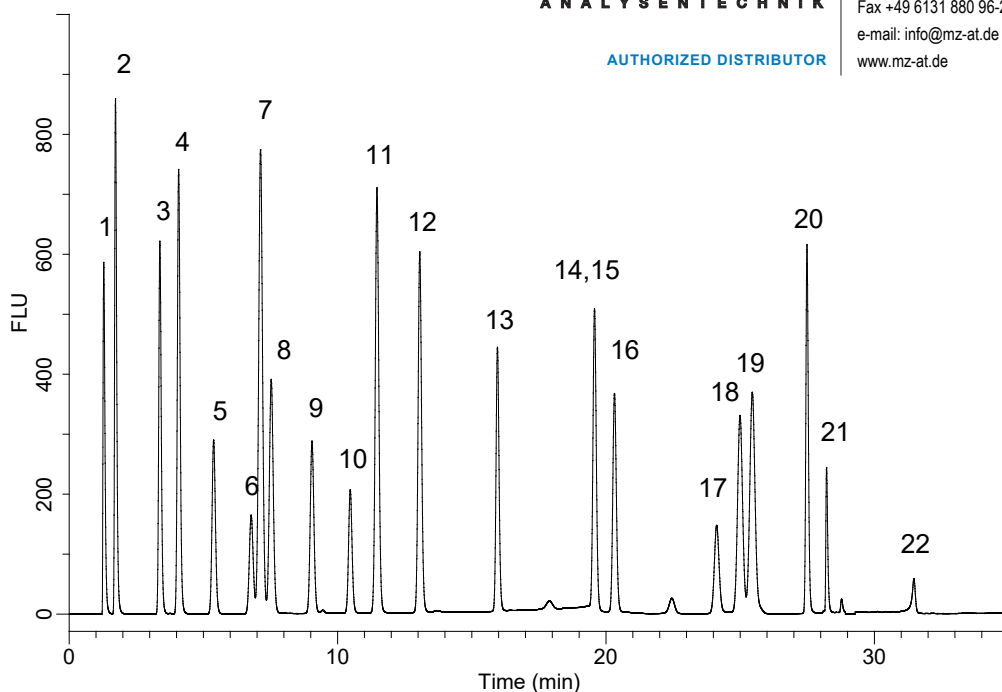
Analysis of Pre-column Derivatized Amino Acids

Data No. LB088-0812



AUTHORIZED DISTRIBUTOR

MZ-Analysentechnik GmbH
Barcelona-Allee 17 • D-55129 Mainz
Tel +49 6131 880 96-0
Fax +49 6131 880 96-20
e-mail: info@mz-at.de
www.mz-at.de



Conditions

System : GL-7400 HPLC system
Column : Inertsil ODS-4 HP
(3µm, 150 x 3.0 mm I.D.)
Column Cat. No. : 5020-14005
Eluent : A) CH₃CN/CH₃OH/H₂O = 45/40/15, v/v/v
B) 20 mM K₂HPO₄ (pH 6.9, H₃PO₄)

Time(min)	A (%)	B (%)
0	11	89
3	11	89
12	22	78
14	28	72
23	30	70
27	65	35
34	75	25
35	100	0

Analyte:

1. OPA-Aspartic Acid
2. OPA-Glutamic Acid
3. OPA-Asparagine
4. OPA-Serine
5. OPA-Glutamine
6. OPA-Histidine
7. OPA-Glycine
8. OPA-Threonine
9. OPA-Citrulline
10. OPA-Arginine
11. OPA-Alanine
12. OPA-GABA(4-aminobutanoic acid)
13. OPA-Tyrosine
14. OPA-Cys-Cys
15. OPA-Valine
16. OPA-Methionine
17. OPA-Tryptophan
18. OPA-Phenylalanine
19. OPA-Isoleucine
20. OPA-Leucine
21. OPA-Lysine
22. Fmoc-Proline
(each 10 µg/mL)

Flow Rate : 0.7 mL/min
Col. Temp. : 35 °C
Detection : FL Ex 350 nm Em 450 nm (0-29 min)
Ex 266 nm Em 305 nm (29-35 min)
(GL-7453 FL Detector)

Injection Vol. : 1 µL
Sample : Derivatized Amino Acids