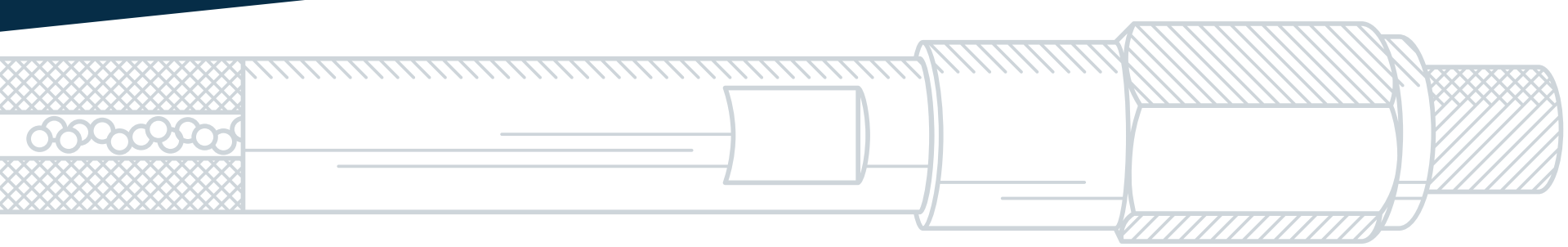
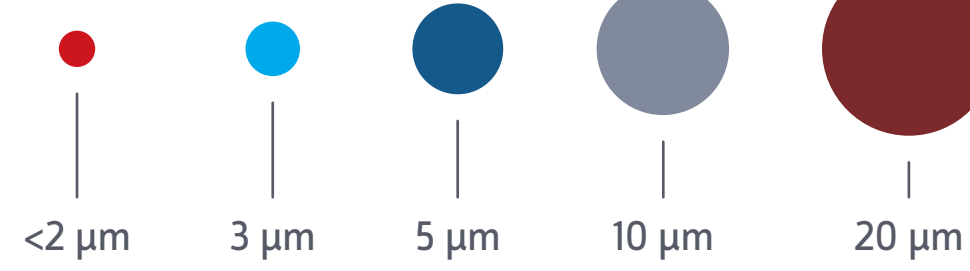


CHIRAL SELECTORS NAMES & STRUCTURES

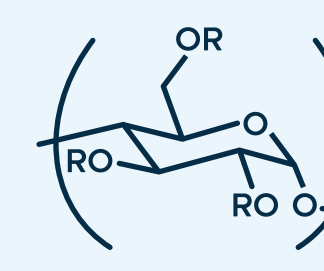
Structures Of Commercially Available Daicel Chiral Stationary Phases



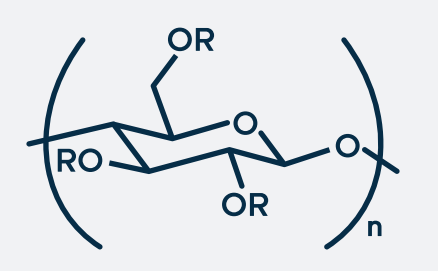
LEGEND



AMYLOSE DERIVATIVES



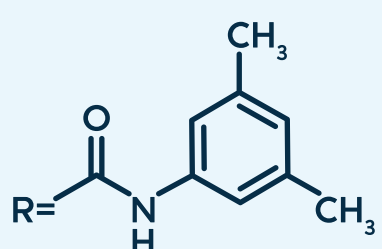
CELLULOSE DERIVATIVES



IMMOBILIZED POLYSACCHARIDE SELECTORS

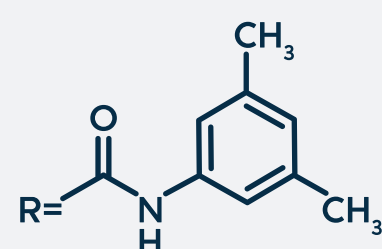
PRIMARY SCREENING SET

CHIRALPAK® IA



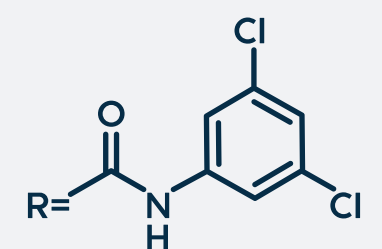
tris (3,5-dimethylphenylcarbamate)

CHIRALPAK IB (-N)



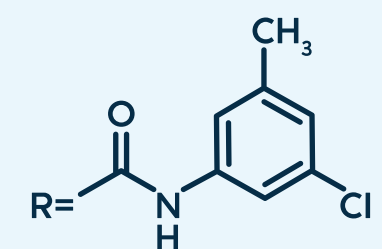
tris (3,5-dimethylphenylcarbamate)

CHIRALPAK IC



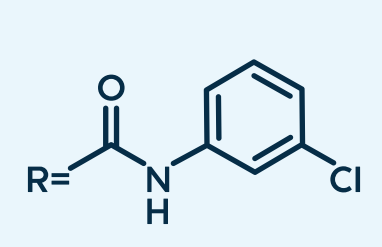
tris (3,5-dichlorophenylcarbamate)

CHIRALPAK IG



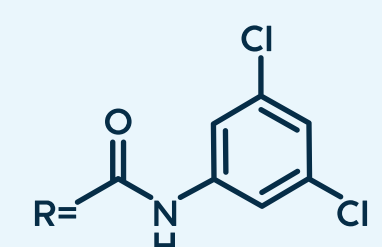
tris (3-chloro-5-methylphenylcarbamate)

CHIRALPAK ID



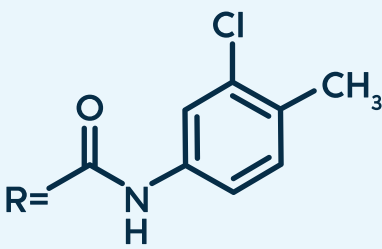
tris (3-chlorophenylcarbamate)

CHIRALPAK IE



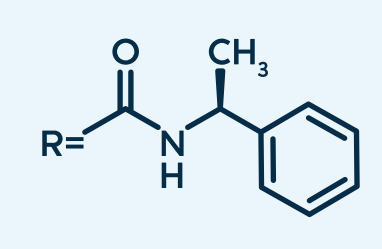
tris (3,5-dichlorophenylcarbamate)

CHIRALPAK IF



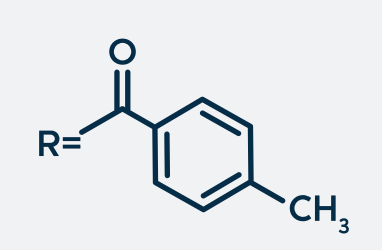
tris (3-chloro-4-methylphenylcarbamate)

CHIRALPAK IH



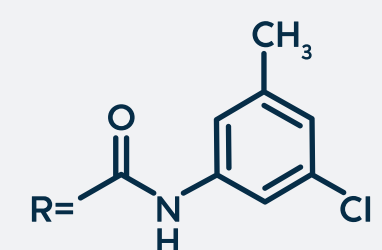
tris (S)-α-methylbenzylcarbamate

CHIRALPAK IJ



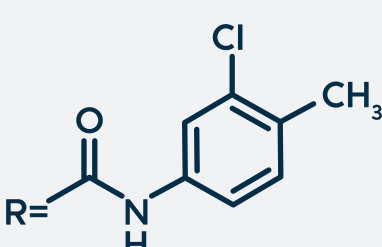
tris (4-methylbenzoate)

CHIRALPAK IK



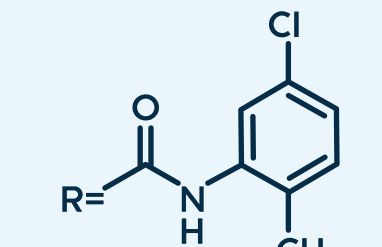
tris (3-chloro-5-methylphenylcarbamate)

CHIRALPAK IM



tris (3-chloro-4-methylphenylcarbamate)

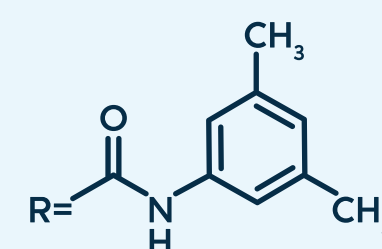
CHIRALPAK IN



tris (5-chloro-2-methylphenylcarbamate)

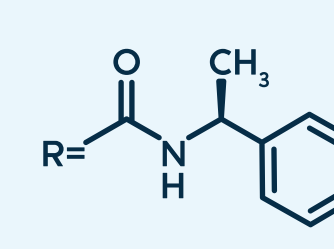
COATED POLYSACCHARIDE SELECTORS

CHIRALPAK AD



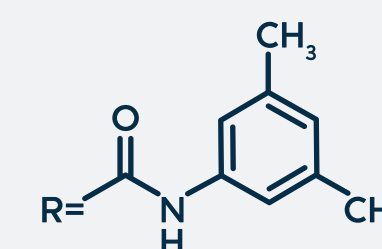
tris (3,5-dimethylphenylcarbamate)

CHIRALPAK AS



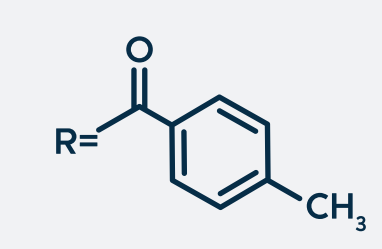
tris (S)-α-methylbenzylcarbamate

CHIRALCEL® OD



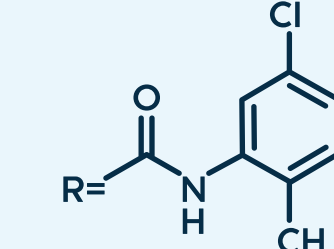
tris (3,5-dimethylphenylcarbamate)

CHIRALCEL OJ



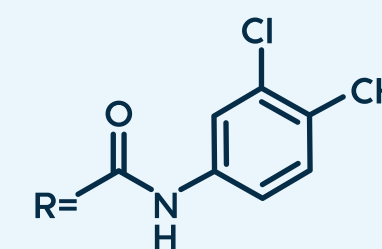
tris (4-methylbenzoate)

CHIRALPAK AY



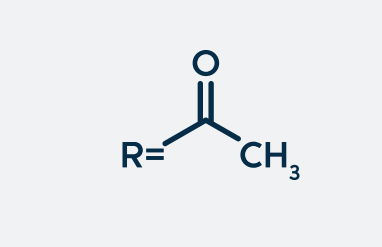
tris (5-chloro-2-methylphenylcarbamate)

CHIRALPAK AZ



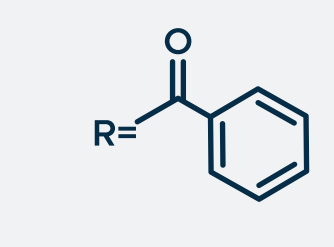
tris (3-chloro-4-methylphenylcarbamate)

CHIRALCEL OA



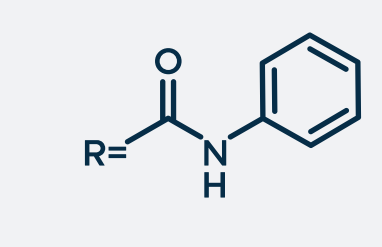
Triacetate

CHIRALCEL OB



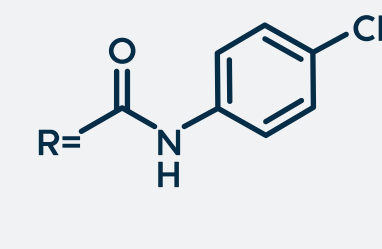
Tribenzoate

CHIRALCEL OC



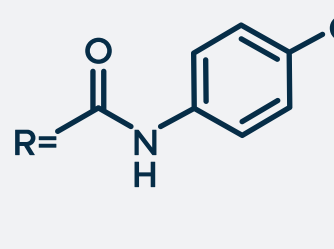
tris (phenylcarbamate)

CHIRALCEL OF



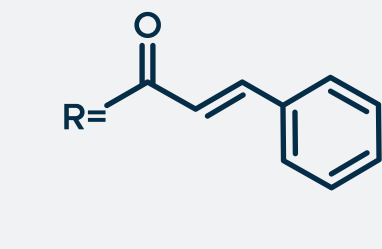
tris (4-chlorophenylcarbamate)

CHIRALCEL OG



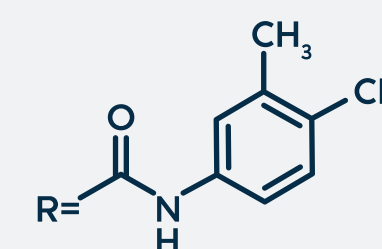
tris (4-methylphenylcarbamate)

CHIRALCEL OK



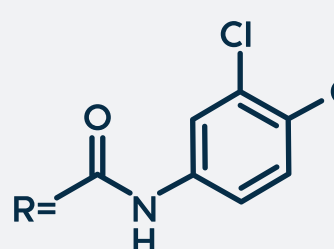
Tricinnamate

CHIRALCEL OX



tris (4-chloro-3-methylphenylcarbamate)

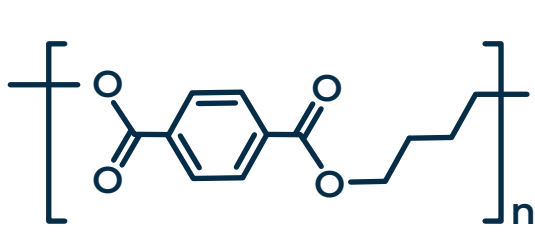
CHIRALCEL OZ



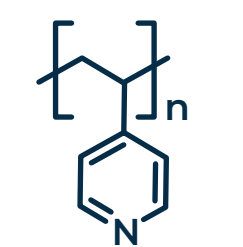
tris (3-chloro-4-methylphenylcarbamate)

ACHIRAL SELECTORS

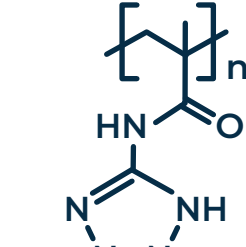
DCpak® PBT



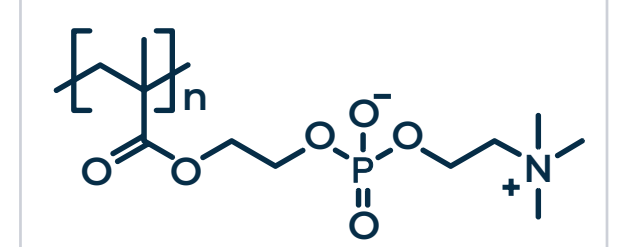
DCpak P4VP



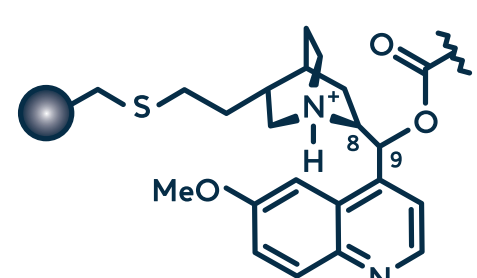
DCpak PTZ



DCpak PMPC

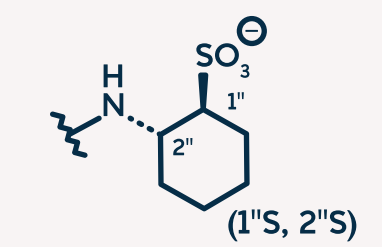


SELECTORS FOR SPECIAL APPLICATIONS

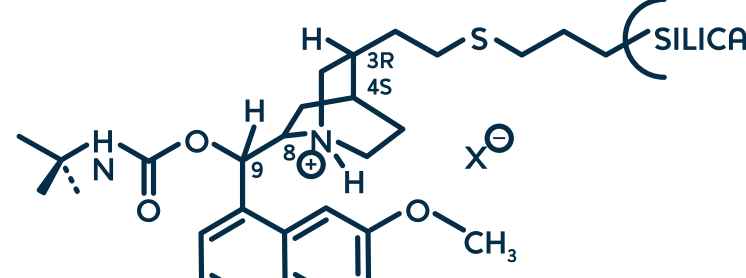


ZWITTERION EXCHANGER

CHIRALPAK ZWIX(+)



Quinine-derived (8S, 9R)



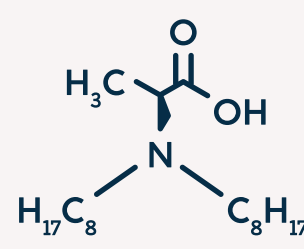
ANION EXCHANGER

CHIRALPAK QN-AX

O-9-(tert-butylcarbamoyl) quinine

LIGAND EXCHANGER

CHIRALPAK MA(+)

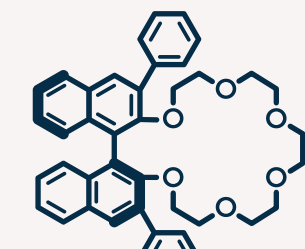


CROWN ETHER AND

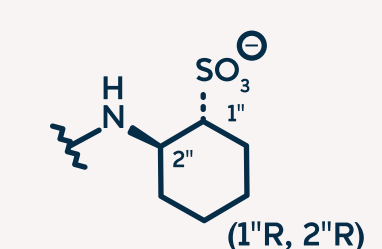
IMMOBILIZED CROWN ETHER

CROWNPAK CR(+)

CROWNPAK CR-I(+)



CHIRALPAK ZWIX(-)

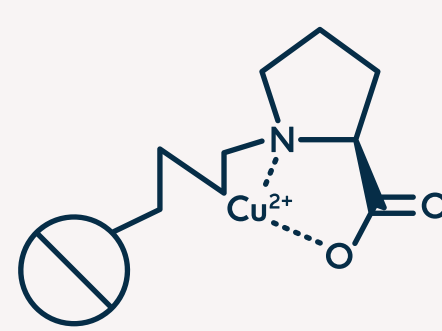


Quinidine-derived (8R, 9S)

CHIRALPAK QD-AX

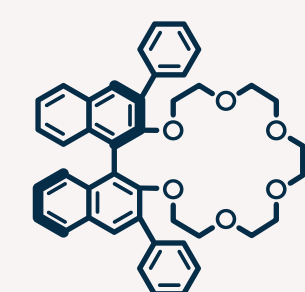
O-9-(tert-butylcarbamoyl) quinidine

CHIRALPAK WH



CROWNPAK CR(-)

CROWNPAK CR-I(-)



USP CODE DESIGNATIONS

L32	L40	L41	L51	L66	L70	L75	L79
CHIRALPAK WH	CHIRALCEL OD CHIRALCEL OD-H CHIRALCEL OD-3	CHIRALPAK AGP	CHIRALPAK AD CHIRALPAK AD-H CHIRALPAK AD-3	CROWNPAK CR(+)	CHIRALCEL OC-H	CHIRALPAK BSA	CHIRALPAK HSA
L80	L90	L93	L99	L107	L108	L117	L119
CHIRALCEL OJ CHIRALCEL OJ-H CHIRALCEL OJ-3	CHIRALPAK AS CHIRALPAK AS-H CHIRALPAK AS-3	CHIRALCEL OD-RH CHIRALCEL OD-3R	CHIRALPAK IA CHIRALPAK IA-3	CHIRALCEL OJ-RH CHIRALCEL OJ-3R	CHIRALPAK CBH	CROWNPAK CR(-)	CHIRALPAK IC CHIRALPAK IC-3
L123	L126	L130	L131				
CHIRALCEL OZ CHIRALCEL OZ-3 CHIRALCEL OZ-H	CHIRALPAK ID	CHIRALCEL OD-R	CHIRALPAK IE CHIRALPAK IE-3				

PROTEIN-BASED SELECTORS

CHIRALPAK AGP	α ₁ -acid glycoprotein
CHIRALPAK BSA	bovine serum albumin
CHIRALPAK CBH	cellobiohydrolase (stable enzyme)
CHIRALPAK DSA	dog serum albumin
CHIRALPAK HSA	human serum albumin
CHIRALPAK MSA	mouse serum albumin
CHIRALPAK PSA	pig serum albumin
CHIRALPAK RSA	rat serum albumin